

INTERNATIONAL CLASSIFICATION OF RETINOPATHY OF PREMATURITY

IMMATURE RETINA

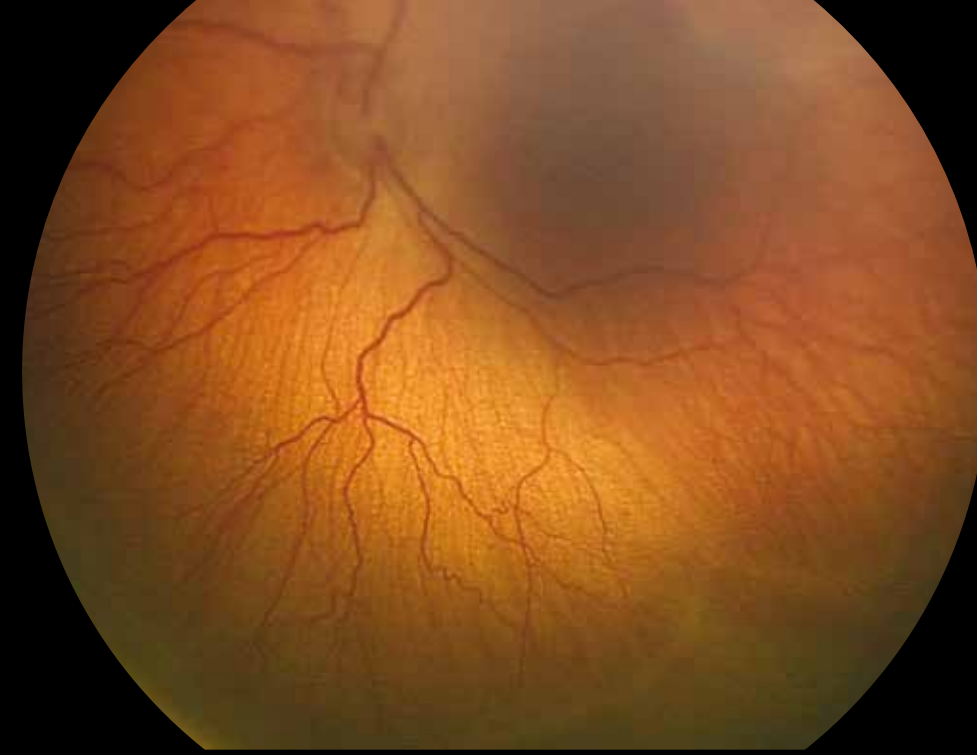


Retinal vessels taper

STAGE 1: DEMARCATION LINE



Demarcation line separates vascular from avascular retina



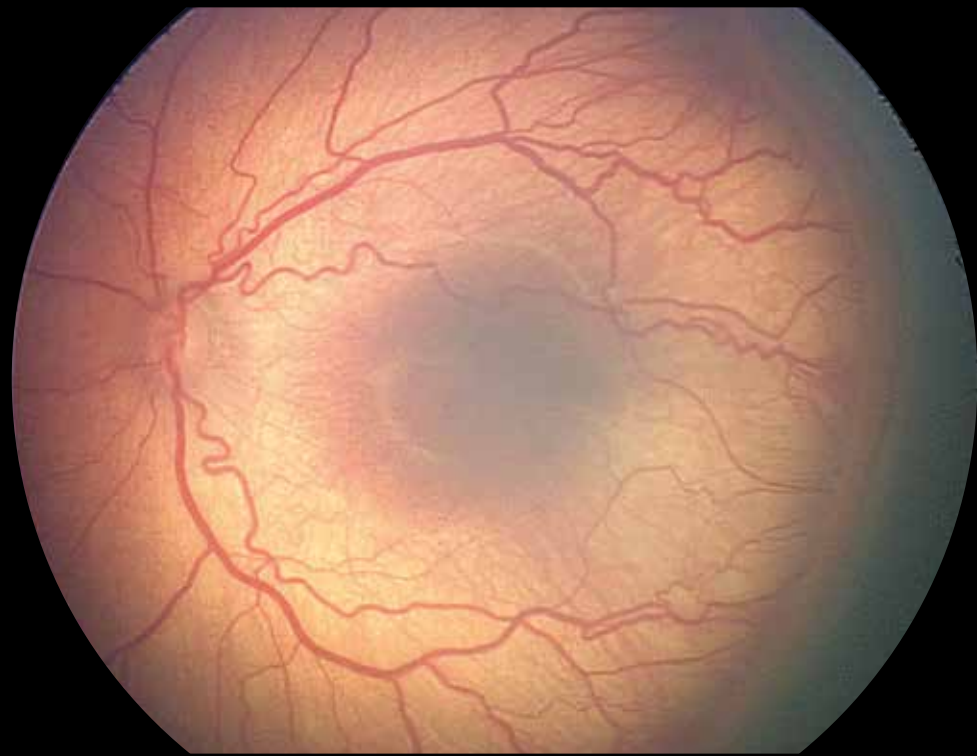
Demarcation line encroaching into Zone 2

STAGE 2: RIDGE

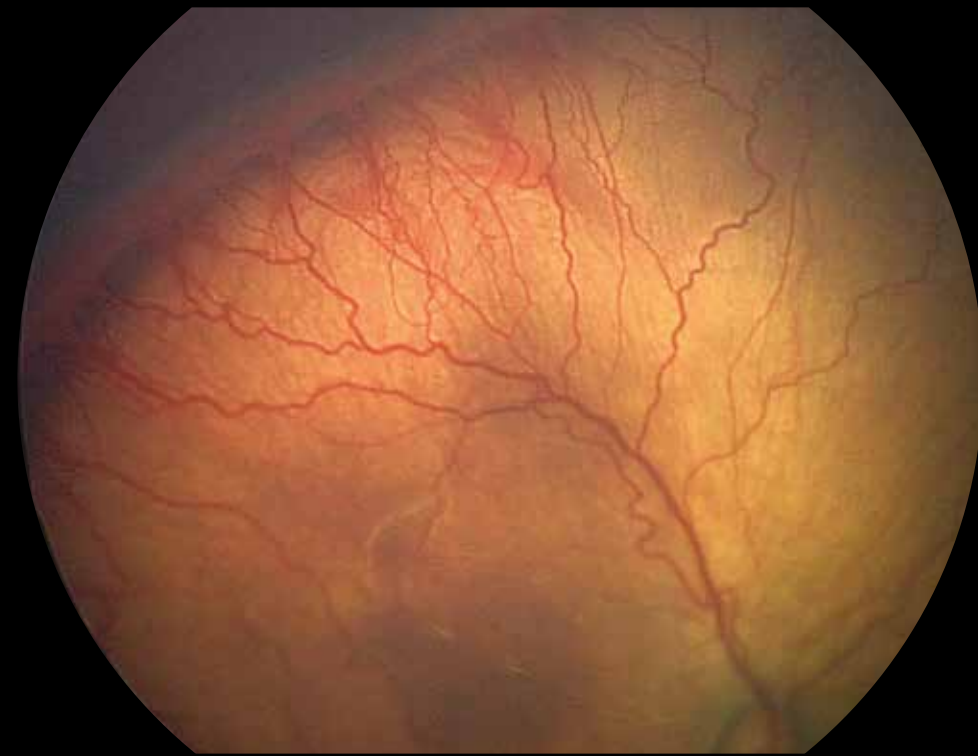


Ridge occupies volume

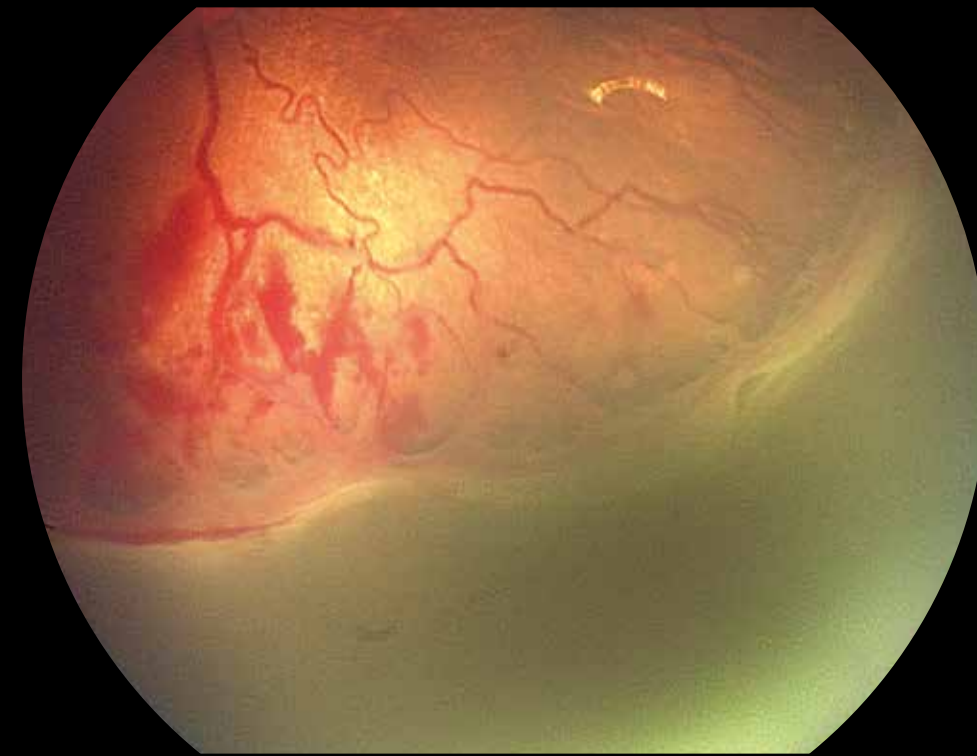
STAGE 3: RIDGE + EXTRARETINAL FIBROVASCULAR PROLIFERATION (R+AFP)



Neovascular ridge with EFP extends into the vitreous



EFP continuous with posterior ridge causing ragged appearance



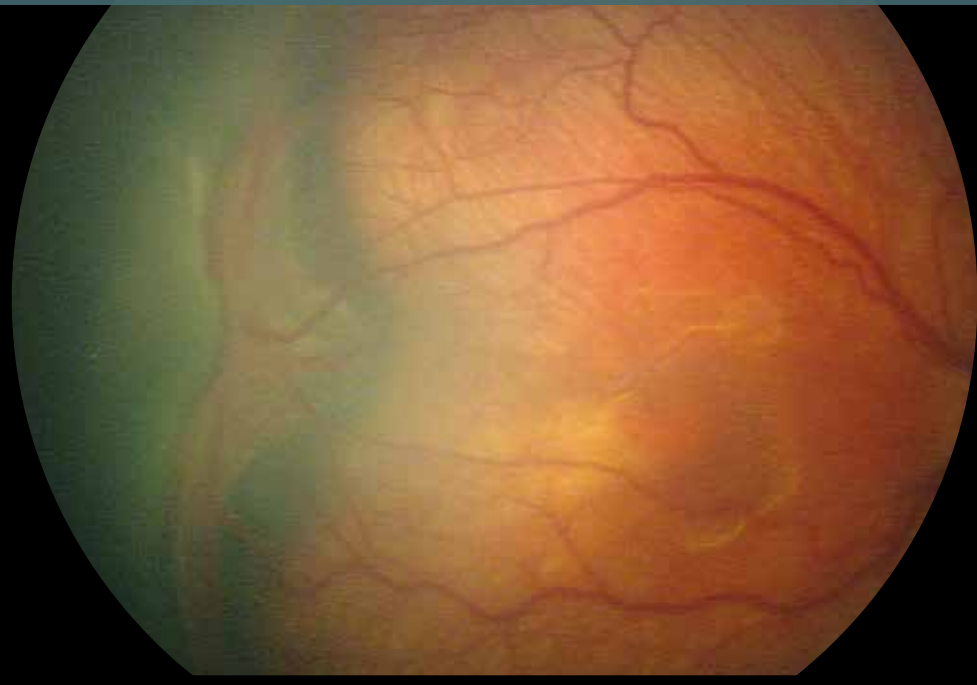
Fibrous component of EFP



Arborization of vessels into EFP lesion

STAGE 4: PARTIAL RETINAL DETACHMENT

4a: Extrafoveal Partial Retinal Detachment



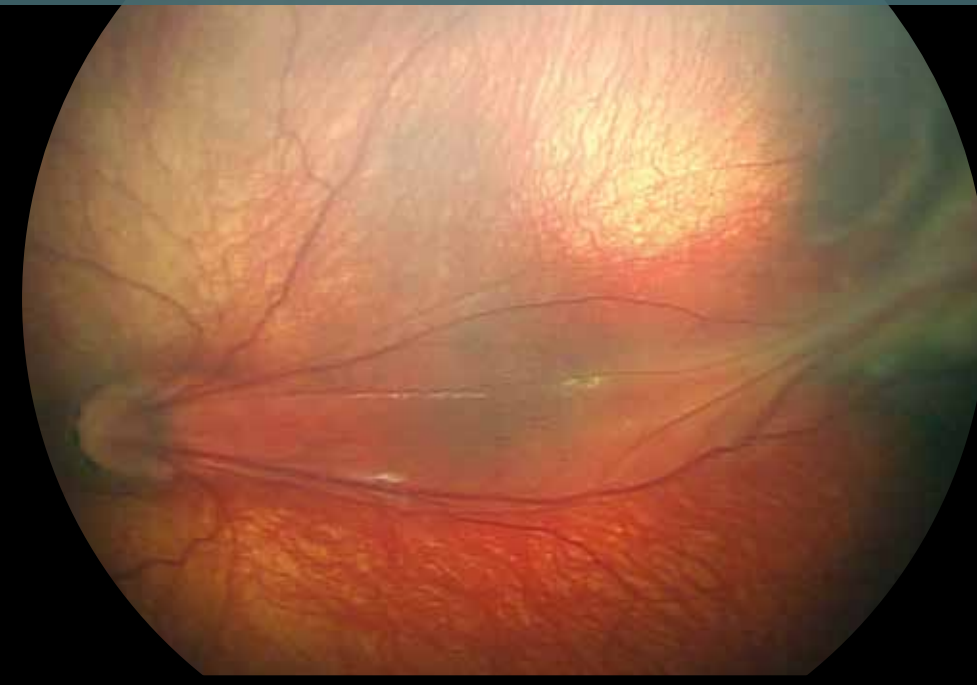
Collapse of the temporal arcade angle

4b: Partial Retinal Detachment

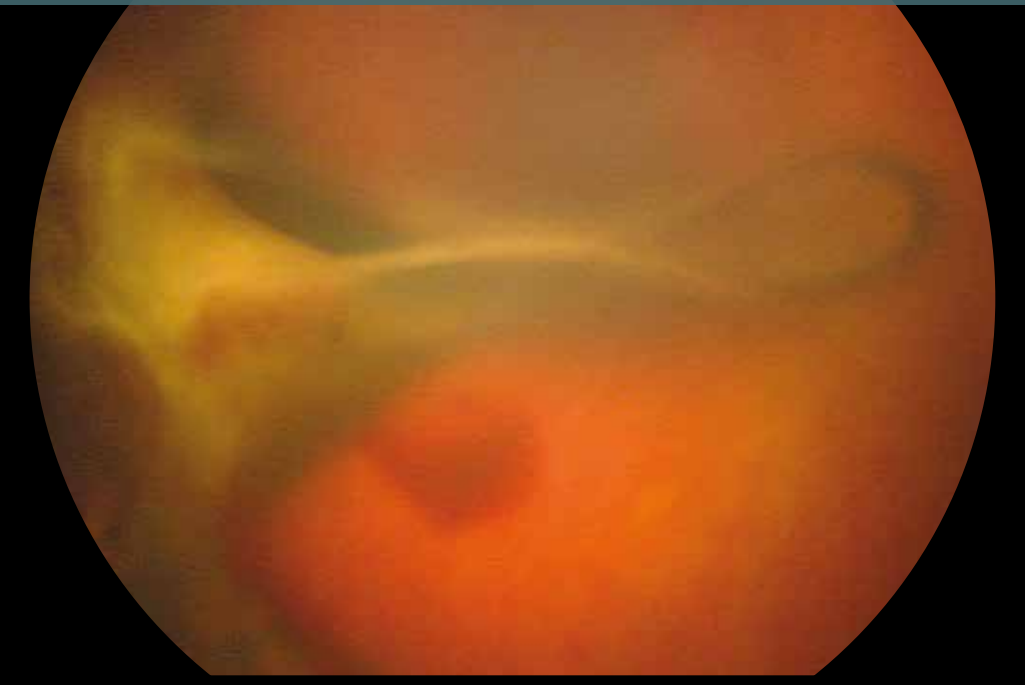


Straightening of posterior retinal vessels off the disc

4b: Partial Retinal Detachment Involving the Fovea



RD begins at fibrovascular connection to vascularized retina



Cicatrization results in macular fold

STAGE 5: TOTAL RETINAL DETACHMENT – subdivided by configuration of funnel



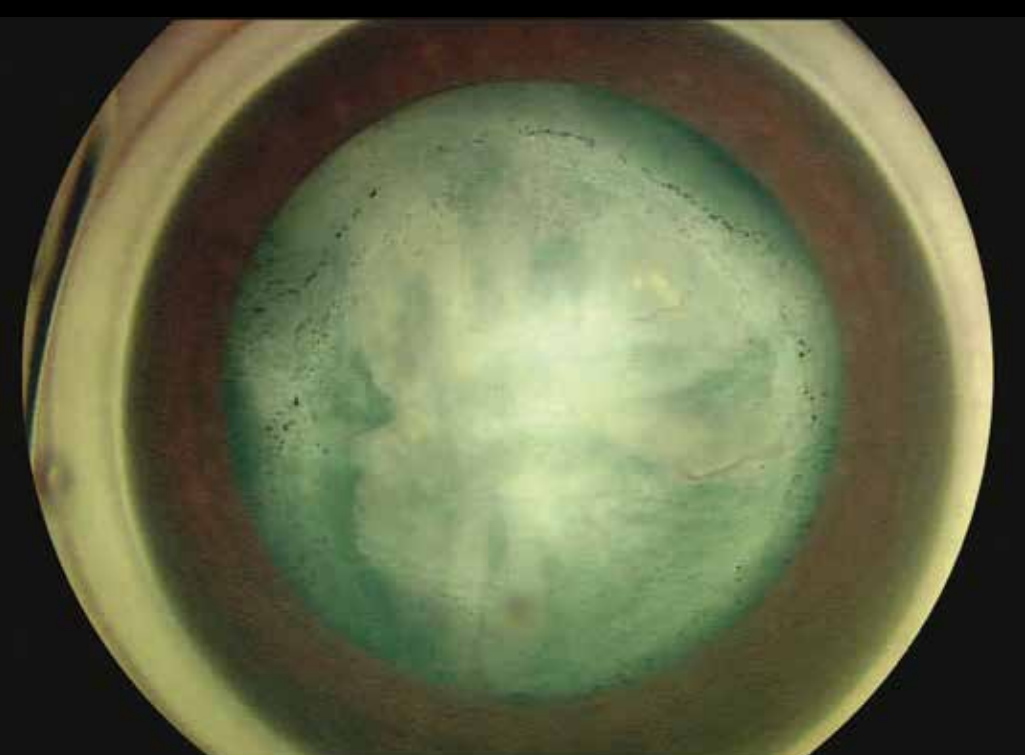
Open funnel detachment anteriorly and posteriorly



Open funnel anteriorly

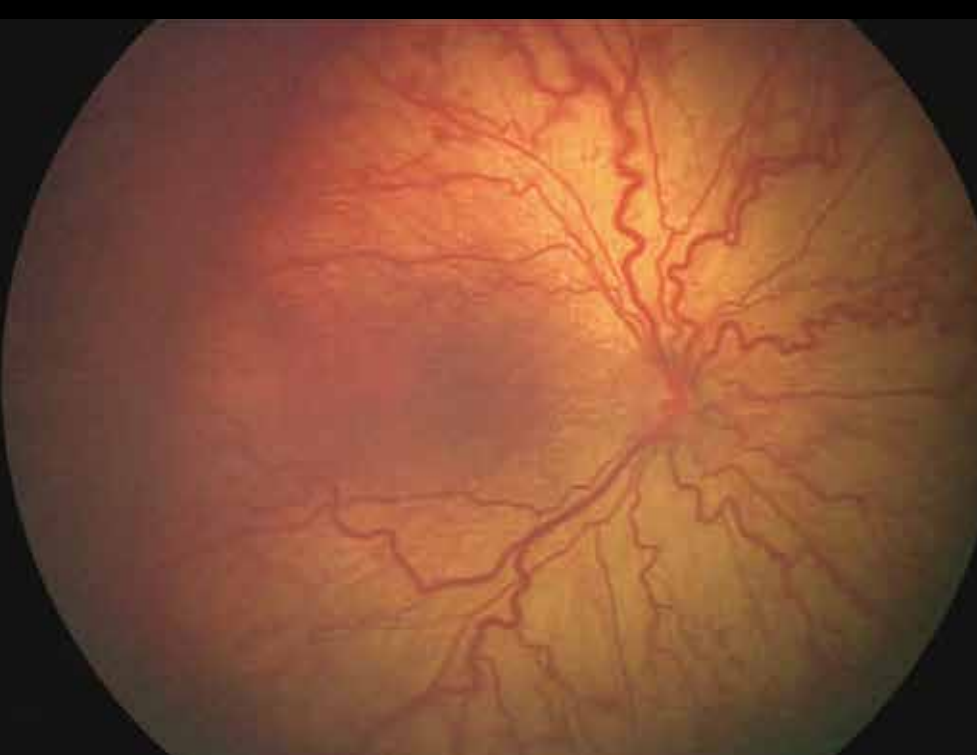


Closed funnel anteriorly

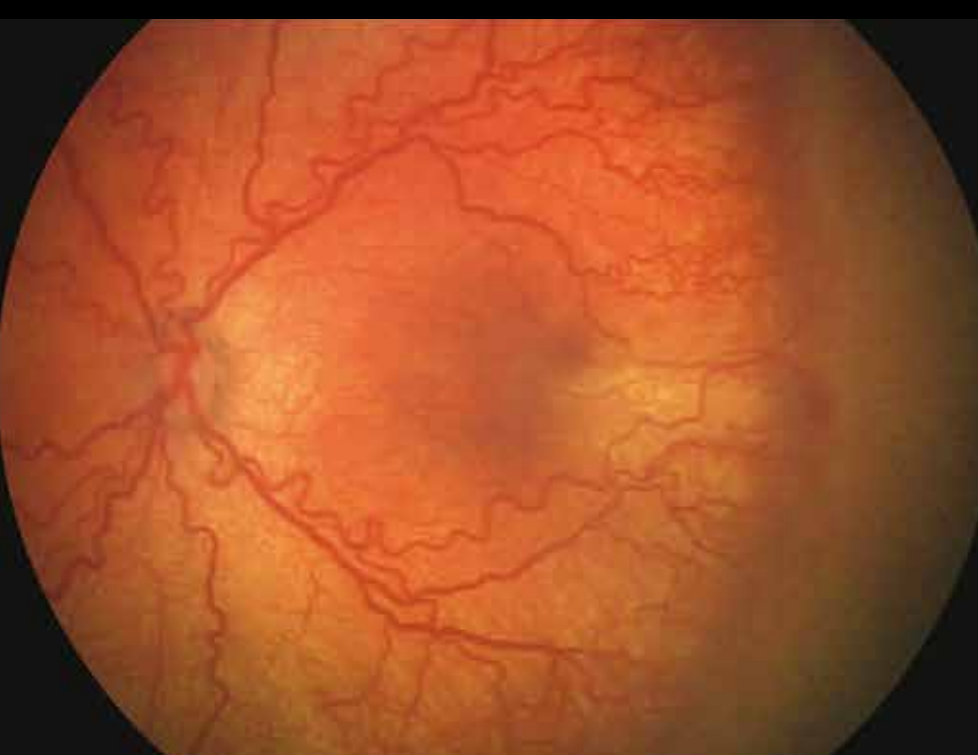


External view of closed funnel detachment

PLUS DISEASE

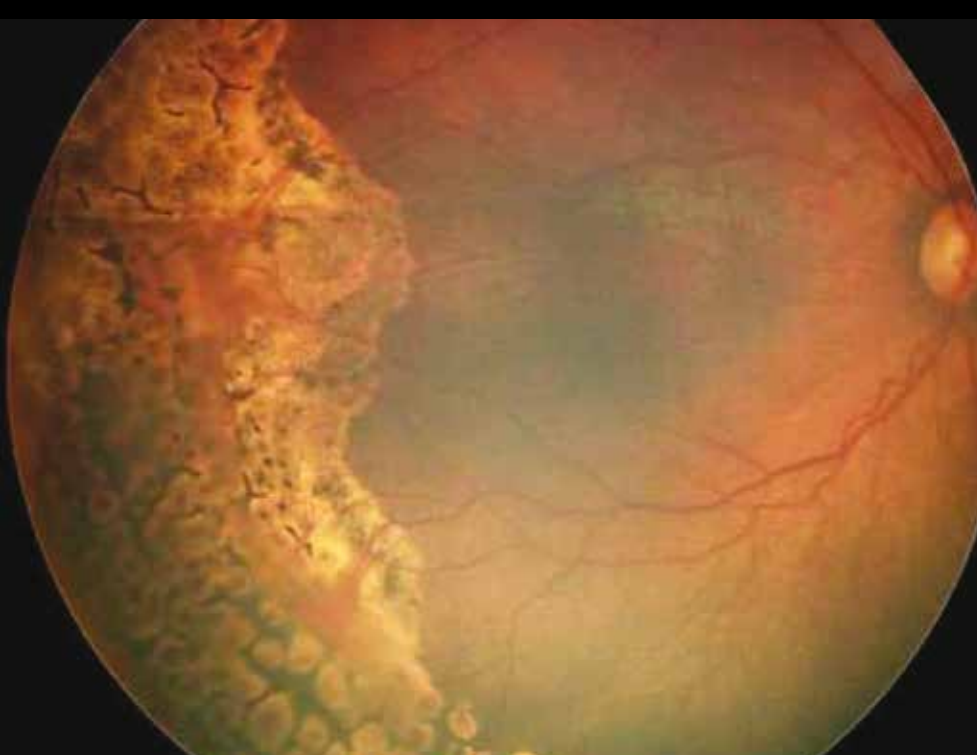


Venous dilation arteriolar tortuosity



Severe plus disease in all four quadrants

FLUORESCEIN ANGIOGRAPHY



Peripheral laser



FA reveals active disease